

## ALUMINUM HAND PUMP - AH series

Max. Working Pressure 700 Bar/10,000 psi, Dual Speed Two Stage



AH750



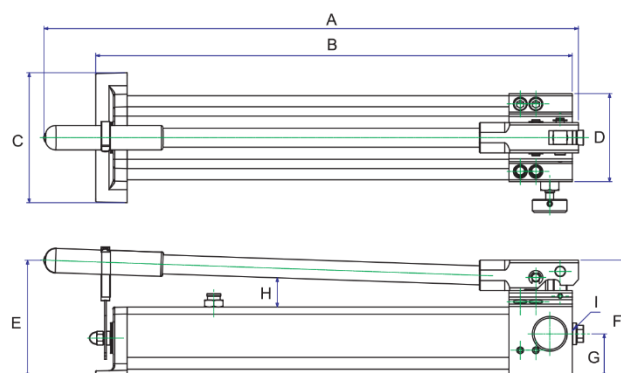
AH350



AH1620D

### FEATURES:

- ✓ Large 3/8" pressure port for maximum flow
- ✓ Rugged construction and light handle efforts.
- ✓ Aluminum Alloy construction and handy release knob with anti-losing mechanism are truly suitable to industrial requirements and your daily works.
- ✓ The light weight design is ideally for easy operation and portability.
- ✓ Double action design on AH1620D is ideal for double acting cylinders, no extra control valve and adapters are requested.
- ✓ Hand pump set available and includes Hose, Gauge, Adapter, Couplings and Carrying case.



### Technical Specifications:

Model	Pressure Bar		Tank Oil Cap.	Usable oil Cap	Oil volume per stroke cc		A	B	C	D	E	F	G	H	I	Weight
-	1st stage	2nd stage	Cm3	Cm3	1st stage	2nd stage	mm	mm	mm	mm	mm	mm	mm	mm	mm	kg
AH350	20	700	500	350	12.9	1.65	391	361	110	77	140	127	42.5	37	3/8" NPT	2.3
AH750	20	700	1000	750	12.9	1.65	542	513	110	77	130	127	42.5	37		3.5
AH1620	20	700	2000	1620	12.9	2.3	623	556	150	102	135	135	50	37		6
AH1620D	20	700	2000	1620	12.9	2.3	623	556	150	102	135	135	24/37	37		7

AH=Aluminum Hand Pump, Following figures stands for the usable oil capacity (cc), D=Double acting